



# Creation Discovery Centre

## SUPPORTER NEWSLETTER No. 6

April 2023

### LIVES IMPACTED AT MUSEUM

“Why do the nations rage, And the people plot a vain thing?

<sup>2</sup> The kings of the earth set themselves, And the rulers take counsel together, Against the LORD and against His Anointed, *saying*,<sup>3</sup> “Let us break Their bonds in pieces And cast away Their cords from us.”

<sup>4</sup> He who sits in the heavens shall laugh; The Lord shall hold them in derision.

<sup>5</sup> Then He shall speak to them in His wrath, And distress them in His deep displeasure: <sup>6</sup> “Yet I have set My King On My holy hill of Zion.” (*Psalm 2:1-5 NKJV*)

The Bible is clear that the world system is against God yet He will prevail. Man's heart is wicked and will deny the Truth rather than be willing to hear God's Word. So it is no surprise when one of our volunteers endured a man seething with anger who came into the Creation Discovery Centre and said “How dare you set up a place like this here amongst these fine examples of scientific endeavour” [referring to neighbouring attractions Seahorse World and Platypus House]. Little did he know he was speaking to the head biologist of Seahorse World. We do not know why he had a problem as he only wanted to vent his anger and immediately leave.

Yet our mission is to “demolish arguments and every pretension that sets itself up against the knowledge of God and take captive every thought to make it obedient to Christ” (2 Cor 10:5). So, we are very grateful that the Lord would use us to be His witness to those who will listen and come into the centre. Like Di, an atheist who came in seeking answers and left encouraged with a Bible after hearing the gospel. James and Kellie came in with their young family wondering what we were about and spent a lot of time speaking with Craig at the front counter. James (a believer) said that Kellie would not believe unless she had proof that there is a God. She was asked if she would come in if it could be proven to her that there must be a God. Kellie agreed and was taken straight to our new Bacterial flagellum machine (see picture), which had been recently installed by volunteer Robert Zanus. After spending some time there talking of the obvious complex design in one of the supposed simplest of creatures, we went and had a look at our Lego design display. Kellie was then asked if we had been able to convince her there must be a God. Her response: “Yes you have”. After more time together, including discussing the need to repent and believe in the Lord, she left with the Gospel of John and other resources.

Mark and Betty came in to buy fossils for their grandson at the end of the day. Two hours later they left after going through the museum, which was not part of their original plan. Mark said, ***“I have never before heard the message tied in with real***

**history.”** They were both very interested and took Christian resources with them as well as a couple of fossils for the grandson!



The new Bacterial flagellum display, demonstrating powerful evidence for design, was installed using donations from supporters and has been effective for witnessing.

Pray for Carla who had been witnessed to for over 3 years by a faithful Christian and came in while a school group was receiving a presentation. After a while she went to the front counter to speak with Rachelle and her friend saying, “It all makes sense now”. She repented of her sins there and then, which included occult involvement, and now needs to find Christian connections in the rural area she lives.

These are some of the many recent opportunities we have had of speaking truth into our community. Consider also, the many children of Christian families that are getting solid evidence to support their young faith.

**“This has made our trip to Tasmania!”**

(Mark and Karen from Bateman’s Bay NSW about their late April visit to the CDC)

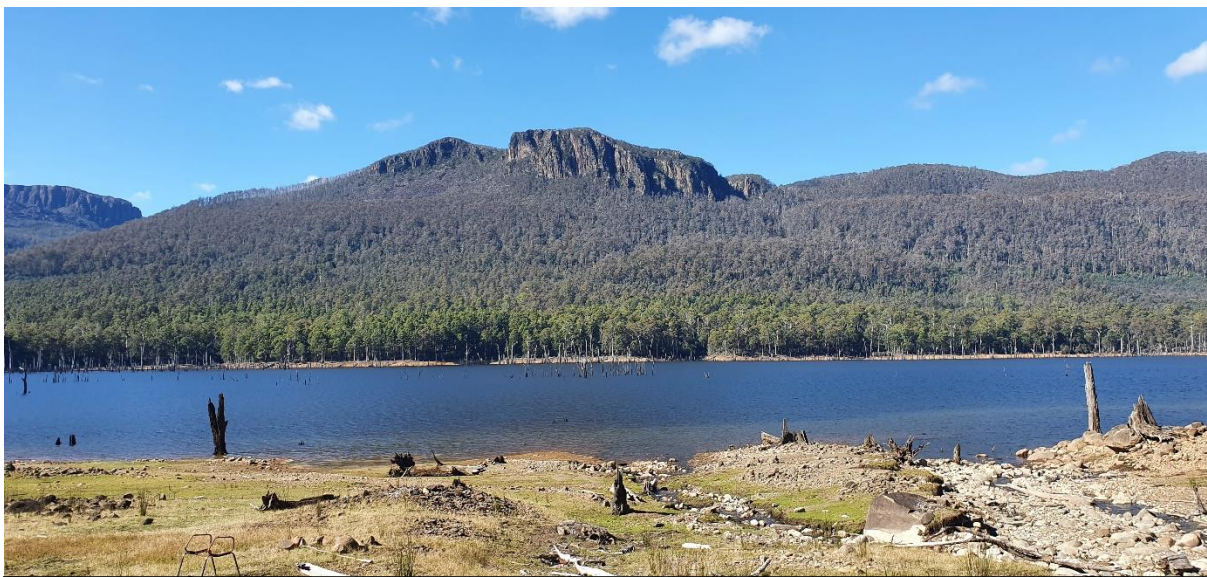
**Lake Rowallan Creation Fossil Hunters Trip**

A group of 10 fossil hunters, travelled along the four-wheel drive only West Rowallan Track in the Upper Mersey River and enjoyed a couple of days and nights camping along the edge of Lake Rowallan. Some beautiful scenery was enjoyed and fossils discovered along the Lake shore. These same Permian fossils can be found at higher elevations up the valley and at lower elevations, reflecting how the mountains were raised and valleys were lowered towards the end of Noah’s Flood when the water was being shed off the landmass. To the north of Tasmania is the Bass Basin, which is 350km wide by 150km long and is 10km deep full of sediments. This is

where some of the massive erosion from the flood ended up and is reflective of catastrophic processes not millions of years of slow build up.



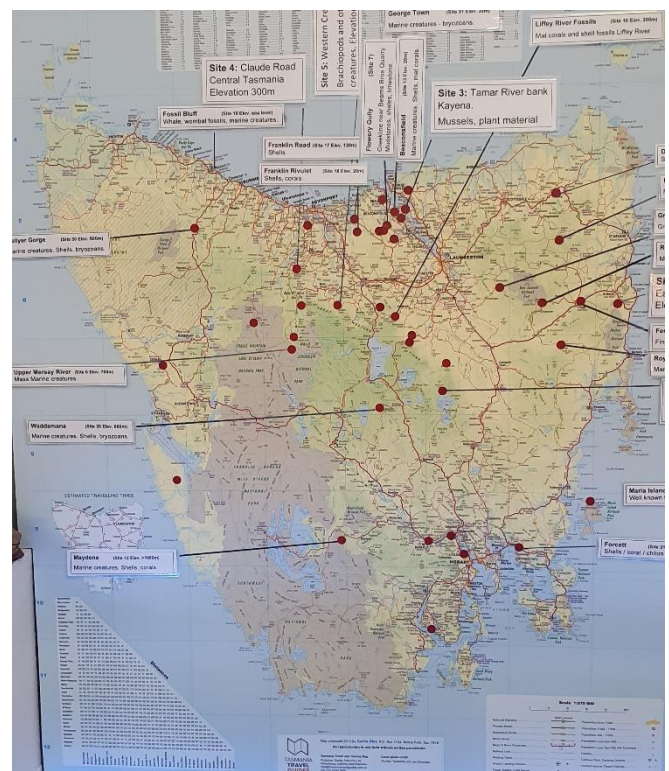
Brachiopod and other fossils found at Lake Rowallan



Howells Bluff and Lake Rowallan from our campsite. This dolerite peak would have been pushed up towards the end of Noah's Flood

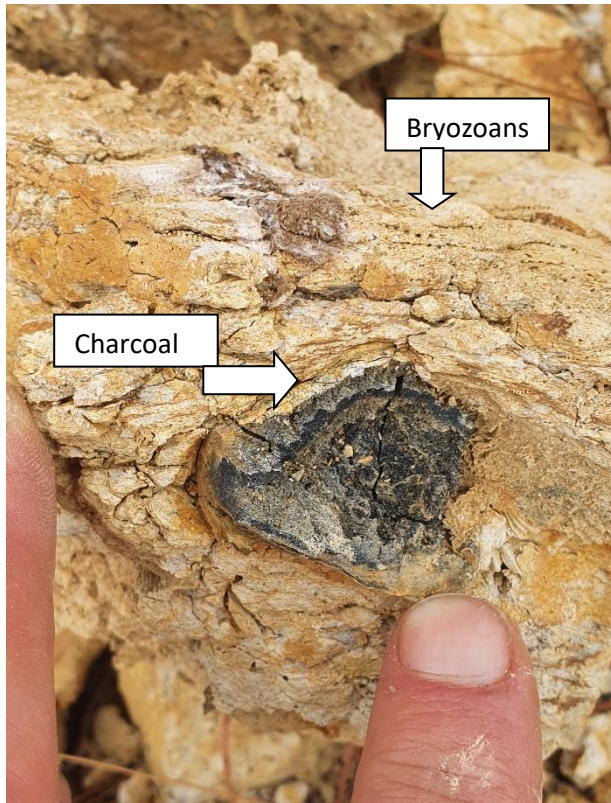
### Fossil sites map grows

The number of sites we have personally recorded of marine fossils across Tasmania has dramatically grown over the last year. Our specimens have increased accordingly and will provide an important scientific resource into the future. Each red dot on the map is a site where we have found marine fossils including at elevations of 1000m (Mt Mueller), 800m (Mt Victoria) and numerous locations between 600-700metres. We hope over the next year to fill in many of the gaps in the map (more travelling). This is powerful evidence of the fact Tasmania has been completely under water in the past.



## New Fossil Gains

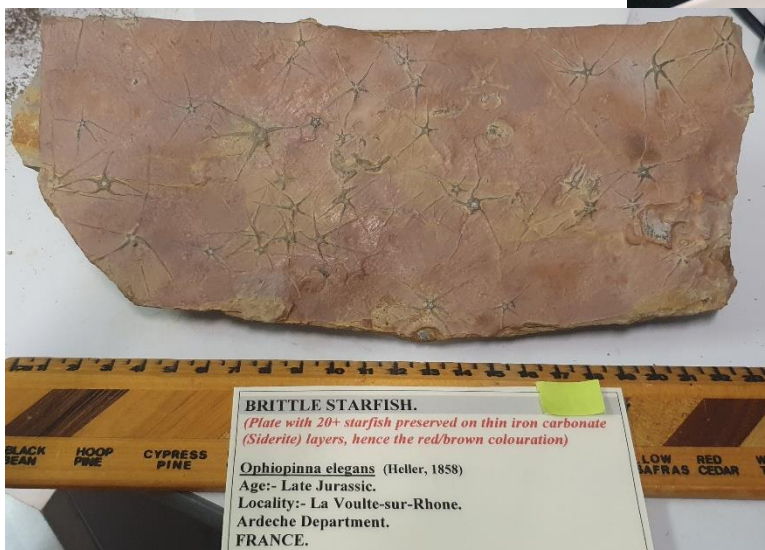
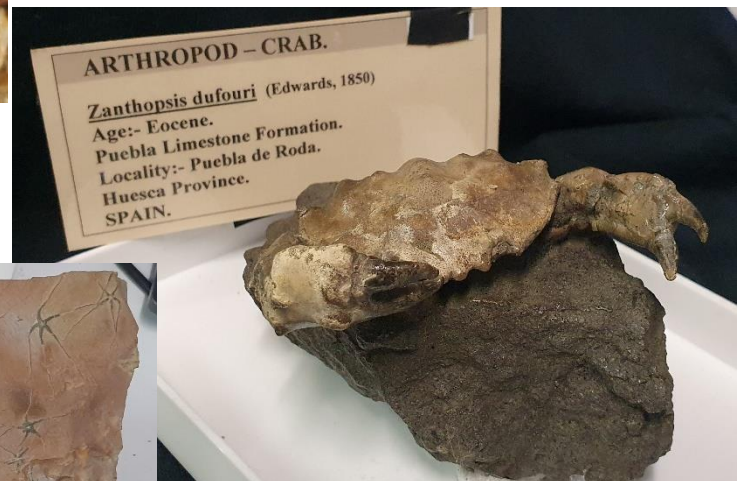
A trip to the Quamby Brook area uncovered an interesting find with a piece of Permian timber. The majority of Permian fossils we currently have are sea creatures so it was great to get a land plant from those rocks.



Earlier, when visiting Hobart we also came across some charcoal in Permian rock that in the same piece had marine Bryozoans! This is evidence of a turbulent event mixing sea creatures and land plants but also of much heat cooking the wood.

We had been visiting the Hobart Gem and Mineral Fair and picked up some fabulous new fossils showing how things have reproduced after their own kinds no matter how many millions of years you want to assign to them. The fossil crab is recognisably a crab even though it is recorded from Eocene rock of approximately 34-56 million years ago.

The brittle starfish plate below has almost 30 brittle stars on it, a creature still found alive in the oceans today but dated here at 150 million years.



It is planned to get some of these on display over the next few months as part of a growing "After Their Kind" exhibit.

Some other great living fossils were also obtained including this awesome coral. It is pictured next to an even more worn modern-day example (on left) from Seahorse World. The fossil coral from Spain is dated by secular dating systems as at least 60 million years old but is little different from our modern example. Such things are not a surprise for those of us who believe that God created all things to reproduce after their own kind. Evolution is a figment of an atheist's imagination.



### New Exhibits – Help Needed

During Craig's trip to Creation Research headquarters in Brisbane a visit was made to a museum model creation company. There were so many fantastic models, but our currently small venue can only fit certain exhibits. We would like to start with getting some Dinosaur heads to enhance the dino display and possibly the entrance and children's area. If you would like to help us get these, please use the direct deposit details below but also contact us so we know you have made the donation. Any amount is most welcome. These are the ones we are wanting:



Large T-Rex head - \$1320 (Picture Right)

Small Allosaurus head - \$500 (right)



Small Triceratops head - \$400 (picture left)

### New Bible Exhibit Installed

We have installed a new Bible display with our donated 170-year-old Bible (thanks to Alan and Joy Horne), now with signage. It speaks of the miraculous nature of the Bible and how it has not changed over the years. Thanks again for your support which has allowed us to invest in these displays! Many people who visit the museum

believe the Bible has changed many times over the years. This display demonstrates how it could not have been written without the hand of God involved.



### More Volunteers Needed

If you would like to help us at the Creation Discovery Centre by manning the desk as a volunteer, please contact Craig. We have lost a few volunteers over the last year due to various reasons. From May to August the centre is open only 3 days per week so even one day a month would help. You do not need any particular 'Creation' expertise just a nice way with people, and perhaps patience during the quieter times of the year. Opening hours are 10am to 3pm, Thurs – Saturday.

### Upcoming events

- 30 April Roland Gospel Hall – Sunday am service Craig Hawkins
- 24<sup>th</sup> May Creation Fossil Hunters – Bronte Park trip – contact Craig  
Early start and full day but no long walking necessarily.
- 1<sup>st</sup> September Men's Pizza Night Wynyard – Craig Hawkins speaking.

### Creation Conversations

If you are a creation buff then consider tuning in to live Creation Conversations with the Creation Research team via the Creation Research Youtube channel every Saturday morning from 6am (Eastern standard time). Lots of different topics covered throughout the year.

### Would you like us to come to you?

If you would like Craig Hawkins to come and speak to your group or church please get in touch to organise a date. Or why not organise a group visit to the CDC as some have already done? We would love to see you.

To get the latest Creation Research scientific news for free via email please either let us know or sign up directly at [www.creationresearch.net](http://www.creationresearch.net)

Email: [tas@creationdiscoverycentre.com](mailto:tas@creationdiscoverycentre.com)

Mobile: Craig 0487 343348